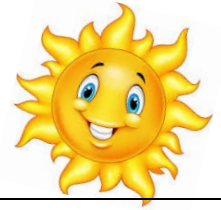


# MONTHLY Bee At L.P.

Classroom Name: Sun

Month: November 2023



## Announcements

- We hope you enjoyed our Halloween performance, we had so much fun performing for our families.
- We will be doing a friendship fruit salad in class on November 21<sup>st</sup>. Please keep an eye out for further information in your child's folder.
- In November we will be starting our marble jar in class for students to earn as a classroom. Marbles are earned by being a "Super Friend", following our class rules, making good behavior choices, & being kind to our classmates. Once the jar is filled the class will earn a special treat.
- Parents, if your family has a special tradition or holiday that you would like to share with your child's class, please coordinate with their teachers.

## Important Dates

- 11/10: School CLOSED for Veteran's Day
- 11/21: Friendship Fruit Salad
- 11/22: Half-Day School Closes at 1:00PM
- 11/23-11/24: School CLOSED for Thanksgiving

## Reminders

- Class begins at 8:45AM, please be on time so that your child does not miss out on any fun or important learning opportunities.
- Please make sure you are signing your child in/out every day through the ProCare app.
- We do lots of fun work during our school day, please check your child's folder daily so that you can discuss all the things they are working on so hard.

## Focus of the Month

- Theme: Fall, Family & Friends, Food & Nutrition, Thanksgiving
- Composer of the Month: Brahms
- Artist of the Month: Mary Cassatt
- Phonics: Letters - Zz, Hh, Cc, Kk, Sight Words - for, play, with, here, are, you, he, she, short "a" blends.
- Math: Eureka - Counting On, capacity, one more, one less, number words, number recognition, patterns, ordinal numbers.